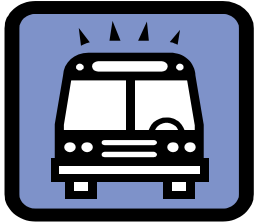


## Getting Around Town



*Do you know how to get around when you do not have a car or a driver license?*

*Are you a senior citizen and can no longer drive? Maybe you have an aging parent, or do not have transportation at this time.*

*This is not the end to your independence.*

*There are many types of public and private transportation services available in Shasta County.*

*The agencies and organizations in this brochure provide human transportation.*

*Please contact the transportation provider of your choice for eligibility, service information, or pricing.*

*Eligibility may vary by provider.*

The following types of agencies may provide transportation to their members or clients:

Assisted Living Centers  
Care Homes  
Churches  
Clinics  
Colleges  
Hospitals  
Learning Centers  
Private Schools  
Public Schools  
Rehabilitation Centers

Distributed by:



1855 Placer Street  
Redding, CA 96001  
530-225-5654  
Website: [www.scrtpa.org](http://www.scrtpa.org)  
Email: [scrtpa@co.shasta.ca.us](mailto:scrtpa@co.shasta.ca.us)

©2007, 2009, 2010 Shasta County  
Regional Transportation Planning Agency

This brochure was funded in part through a grant from the Federal Highway Administration and Federal Transit Administration, U.S. Department of Transportation, and Transportation Development Act Funds.

## NEED A RIDE?

### Transportation Resources In Shasta County



**Contact information for agencies and organizations that provide transportation in Shasta County**

May 2010

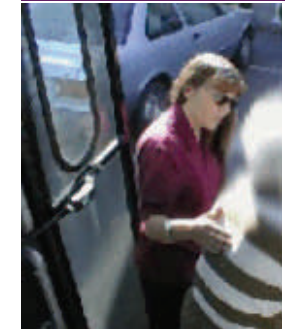
## What Type of Transportation Do You Need?

Ride the big blue bus



Door-to-door and curb-to-curb service for qualifying individuals.

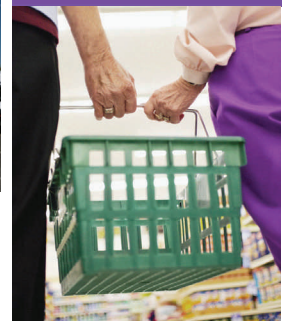
Ride to a medical appointment.



Help shopping.



Going to the coast or Reno? Ride on a connecting bus service.



This list was compiled from a program survey and may not be inclusive of all transportation providers in the area. Information is subject to change.

## Public Transportation Providers

### Redding Area Bus Authority (RABA)

Website: [www.rabaride.com](http://www.rabaride.com)

For all RABA Services:

Contact: 530-241-2877 or Toll Free 800-803-7222

Find route information on Google Maps transit link:



### Fixed-Route Service

Provides fixed-route service in the urban areas of Anderson, Redding, and Shasta Lake.

Hours of Service:

Monday-Friday	6:30 am—7:30 pm
Saturday	9:30 am—7:30 pm

### Demand-Response Service

Provides curbside service within 3/4 of a mile of the fixed-route service. For individuals who, because of a disability, are unable to use a regular fixed-route bus.

Hours of Service:

Monday-Friday	6:30 am—7:30 pm
Saturday	9:30 am—7:30 pm

### Burney Express

Offers round-trip service twice daily

Hours of Service (Monday-Friday):

From Burney	6:00 am, 12:00 pm
From Redding	10:35 am, 5:45 pm

## Private Transportation Providers

**ABC Cab** Contact: 530-246-0577

**Yellow Cab** Contact: 530-222-1234

### Sacramento Airport Shuttle (First Class Shuttle)

Website: [www.reddingfirstclassshuttle.com](http://www.reddingfirstclassshuttle.com)

Contact: 530-605-0137

## Specialized Transportation Providers

### Far Northern Regional Center

Website: [www.farnorthernrc.org/home.htm](http://www.farnorthernrc.org/home.htm)

Contact: 530-222-4791

For persons with developmental disabilities.

Provides transportation to day programs and work sites.

### Northern Valley Catholic Social Services

Website: [www.nvcss.org](http://www.nvcss.org)

Contact: 530-241-0552

Hours of Service (Monday-Friday): 8:00 am-4:00pm

For persons with mental disabilities. Provides transportation to rehabilitation or vocational training programs.

### Shascade Community Services

Website: [www.shascade.org](http://www.shascade.org)

Contact: 530-243-1651

Hours of Service (Monday-Friday): 8:00 am-5:00 pm

For persons with disabilities. Provides transportation to work program sites.

### Shasta County Opportunity Center

Website: [www.oppcenter.org](http://www.oppcenter.org)

Contact: 530-225-5781

Office Hours (Monday-Friday): 8:00 am-5:00 pm

For persons with disabilities. Provides transportation to work sites in Anderson, Redding, and Shasta Lake.

Work crew transportation is available 24 hours a day, seven days per week.

### Shasta Senior Nutrition Program (SSNP)

Website: [www.ssnweb.org](http://www.ssnweb.org)

Contact: 530-226-3075

Hours of Service (Monday-Friday): 8:00 am-4:00 pm

For persons 60 years of age and older. SSNP also provides service to mobility-impaired individuals or those with disabilities outside of the RABA service area.

## Medical Only Transportation Providers

### Mercy Outreach Van

Contact: 530-410-5569

Provides transportation to Mercy Medical Center for medical procedures from the outlying areas of Burney, Red Bluff, and Weaverville.

### Pit River Health Services

Contact: 530-335-5090

Must be a Native American and/or a family member.

Must be a registered patient.

### Redding Rancheria

Website: [www.redding-rancheria.com](http://www.redding-rancheria.com)

Contact: 530-226-1753

Must be a Native American and/or a family member.

Must be a registered patient.

### Veterans Affairs(VA) - Redding Outpatient Clinic

Contact: 530-226-7575

Must be a veteran. Provides service to VA facilities in Sacramento and Martinez.

## Non-Emergency Medical-Only Transportation Providers

The following agencies accept Medi-Cal and private pay:

**CARE-A-VAN** Website: [www.medicalhomecarepros.com](http://www.medicalhomecarepros.com)  
Contact: 530-221-4826

**Merit Medi Trans** Contact: 530-221-4321

**Precious Cargo** Contact: 530-243-3333

**Quality Medi-Ride** Contact: 530-222-2392

## Home Health Care Client Transportation

**Arcadia Health Care** 530-223-2332

**Compass Care Services** 530-232-5543

**Home & Health Care Management** 530-222-3371

**Home Helpers** 530-226-8350

**Medical Home Care Professionals** 530-226-5577

**Visiting Angels** 530-223-2400

## Connecting Transportation Providers

Please contact provider for schedules and fares

### Amtrak

Website: [www.amtrak.com](http://www.amtrak.com)

Contact: 800-872-7245

### Greyhound

Website: [www.greyhound.com](http://www.greyhound.com)

Contact: 530-241-2070 or Toll Free 800-231-2222

### Sage Stage

Website: [www.sagestage.com](http://www.sagestage.com)

Contact: 530-233-6410

Round-trip service from Alturas to Redding

### Susanville Indian Rancheria Public Transportation Program

Contact: 530-257-1128

Round-trip serving Susanville, Redding, and Red Bluff

### Trinity Transit

Website: [www.trinitytransportation.org](http://www.trinitytransportation.org)

Contact: 530-623-5438

Round-trip service from Weaverville to Redding